

POLICY

CLEMENTON
BOARD OF EDUCATION

Administration
1110/Page 1 of 1
ORGANIZATIONAL CHART

1110 ORGANIZATIONAL CHART

Line of Responsibility

The Clementon Board of Education shall operate under a unit control system headed by the Superintendent/**Principal**.

The authority of the Clementon Board of Education is transmitted through the Superintendent/**Principal** along specific paths from person to person as shown in the organization chart of Clementon School District. The lines of authority represent direction of authority and responsibility. The lines are those approved by the Clementon Board of Education and are intended to establish clear understanding on the part of all personnel of the working relationships in the school system.

Personnel are expected to refer matters requiring administrative action to the administrator to whom they are responsible. Personnel are expected to keep the person to whom they are immediately responsible informed of their activities by appropriate means.

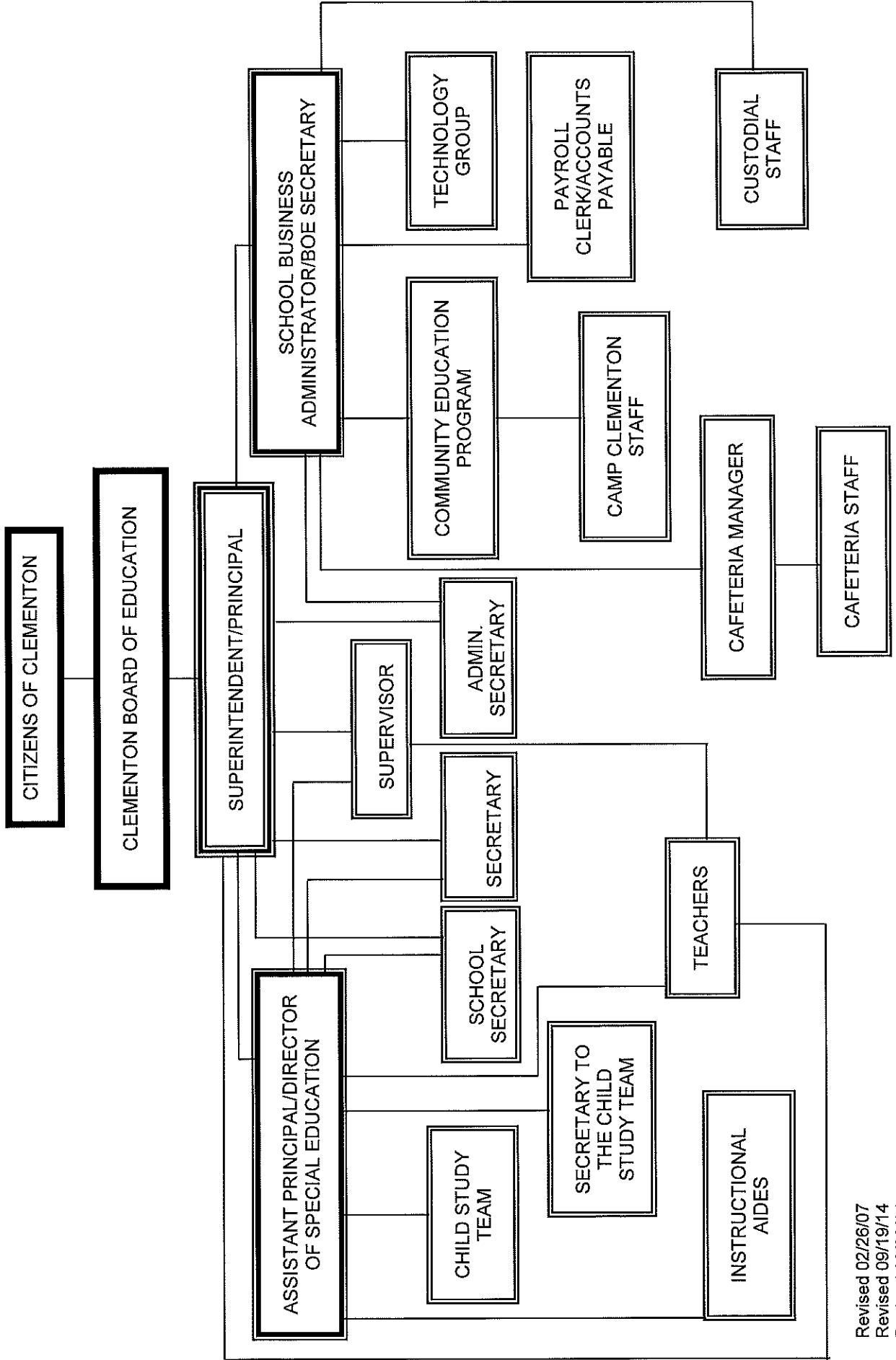
Adopted: 27 July 2009

Revised, First Reading: 25 April 2016

Revised, Second Reading and Adoption:



CLEMENTON BOARD OF EDUCATION
Organizational Chart



Revised 02/26/07
 Revised 09/19/14
 Revised 09/30/14
 Revised 09/28/15
 Revised 04/25/16

PHILOSOPHY OF EDUCATION/DISTRICT MISSION STATEMENT (M)

2110 PHILOSOPHY OF EDUCATION/DISTRICT MISSION STATEMENT (M)

M

The Clementon School District is dedicated to a meaningful collaboration among parents, **students**, pupils, administrators, teachers, support staff, Board of Education members, and the community. Our daily mission is to provide every **student** pupil with a high-quality education driven by the New Jersey Core Curriculum Content Standards **and Common Core State Standards**. We are committed to providing a secure, nurturing school climate in order to provide for the educational, social, and emotional needs of pupils and staff.

Adopted: 27 July 2009



2230 CURRICULUM UNIT PLANS (M)

M

The Board of Education directs the preparation of a curriculum unit plan for each approved course of study in order to direct and assist teaching staff members toward the attainment of goals addressed by that course.

Each curriculum unit plan will contain, as appropriate to the course of study, content standards, which are the New Jersey Core Curriculum Content Standards and Common Core State Standards; **any other New Jersey Department of Education adopted state standards**, ~~Student Learning Objectives (SLOs) from the New Jersey Department of Education, if available for the course of study, to be taught~~; academic vocabulary; assessments; suggested activities; inclusion of interdisciplinary connections; 21st century life and careers; pacing guides; list of core instructional materials, including various levels of text at each grade level; modifications for special education students, English language learners, students at risk of school failure and gifted students.

The curriculum unit plan will be the basic instructional tool for each course of study.

Each teacher shall conduct the course of study as required by the curriculum ~~guide~~ unit plan. Any deviation from the standards ~~or student learning objectives~~ within the unit plan ~~plan~~ must be approved by the **Superintendent/Principal, Assistant Principal, or Supervisor** ~~Building Principal~~ in advance of its implementation.

The Superintendent/**Principal** shall be responsible for overseeing the development of curriculum unit plans, and shall develop a plan for such preparation that could include, but not limited to, the participation of appropriate staff members and resource personnel; the participation of members of the community; the participation of pupils at appropriate grade levels; continuing research in instructional methods, materials, and activities; systematic review of all curriculum unit plans to ensure their continuing usefulness in achieving goals set by the Board; and a system of administrative review to ensure that curriculum unit plans are being followed by teaching staff members to the degree of conformity desired by the Board.

Adopted curriculum unit plans should continue to be implemented if no changes are made. The Board understands that developing curriculum unit plans is an ongoing process and changes could occur in the **curriculum** unit plans as lessons are being created and as more effective resources are found. This could include, but not limited to, changing the scope and sequence of standards, finding more effective activities to teach



POLICY

to the standards, updating assessments, etc. Updated curriculum unit plans will be submitted to the Superintendent/**Principal** for review and ~~Board~~ approval.

OPTIONAL:-

Prior to each school year, All new curriculum unit plans and revisions of existing unit plans shall be submitted to the Board for approval before they are implemented.

Copies of all current curriculum unit plans shall be kept on file in the offices of the **Superintendent/Principal and/or Assistant Principal. Building Principal or designee.**

N.J.S.A. 18A:33-1

N.J.A.C. 6A:8-3.1

Adopted: 27 July 2009

Revised, First Reading: 27 October 2014

Revised, Second Reading and Adoption: 24 November 2014

Revised, First Reading:



R 2230 CURRICULUM UNIT PLANS (M)

M

A curriculum unit plan will be prepared for each course of study to be taught in this district. Curriculum unit plans should be planned and organized to provide sequential learning experiences in the grade levels concerned.

A. Preparation

1. The Superintendent/Principal is responsible for overseeing the development of the curriculum unit plans.
2. Curriculum guides/unit plans are best developed with the assistance of the teaching staff members who will use them. Accordingly, appropriate staff representatives will be appointed to committees to study, revise, and/or develop curriculum unit plans.

B. Content

1. Included in the curriculum unit plans are the **following**: ~~adopted core curriculum content and common core state standards.~~
 - a. **content standards, which are the New Jersey Core Curriculum Content Standards and Common Core State Standards; any other New Jersey Department of Education adopted state standards;**
 - b. **Academic vocabulary;**
 - c. **Assessments;**
 - d. **Suggested activities;**
 - e. **Inclusion of interdisciplinary connections;**
 - f. **21st century life and careers;**
 - g. **Pacing guides;**
 - h. **List of core instructional materials, including various levels of text**



at each grade level;

i. Modifications for special education students, English language learners, students at risk of school failure and gifted students.

- ~~1. Student learning objectives should be specific statements of academic objectives, that is, the concepts and skills that should be achieved. These could include the standards and student learning objectives.~~
- ~~2. Teaching strategies should include, where appropriate, specific instructional methods, unit timeframe, and resources.~~
- ~~4. Evaluation techniques should include, but not limited to, such specific techniques as sample tests, suggested projects or performance outcomes, quizzes, benchmarks, etc.~~

C. Implementation

1. Teachers will adhere to the content of curriculum unit plans in accordance with Policy No. 2230.

Issued: 27 July 2009

Revised, First Reading: 27 October 2014

Revised, Second Reading and Adoption: 24 November 2014

Revised, First Reading:

